

# THE BRIGHTER SIDE!

## What's New?

### Introducing New Lines

Sunrise Lighting Systems has acquired a few more lines that we are rather excited about! These lines have improved our already well rounded line card. Each new manufacturer will be highlighted in the next few pages. If you have any questions about these lines, please do not hesitate to call or email any of our salesman. Thank you!



*"More and more, so it seems to me, light is the beautifier of the building."*

*- Frank Lloyd Wright*

## New Employee?!

Head on over to page 10 to learn a little about him!

### In This Issue

- JLC-Tech
- Ayre Lighting
- Optec LED Lighting
- Texas Fluorescents
- New Employee!
- Who's who?

# JLC • tech



## T-BAR LED Smartlight™

### LED Generation

The T-BAR LED Smartlight™ is a lighting system integrated into T-Bars for suspended ceilings, using the most powerful LEDs available on the market. This is possible due to our Patented high performance heat dissipating system, designed in the shape of a standard T-BAR to allow our product to be fully integrated or retrofit into any type of suspended ceiling.

JLC-Tech was founded in 2010 with one singular vision: to create unique and useful LED lighting fixtures. The founders of JLC-Tech LLC have more than 30 years of combined experience in the international lighting industry and business management.

JLC-Tech is designing and producing lighting products utilizing LED technology, while abandoning the already over-used standards for light fixture design. JLC-Tech is dedicated to maximizing the energy saving qualities of LED's and marrying them to modern, creative and structurally interactive designs.



Next generation green lighting solutions  
for suspended ceiling applications



## Diffusing Lens

T-BAR LED Smartlight 15/16" & 9/16"



## 4L Model

T-BAR LED Smartlight 15/16" & 9/16"



## Acrylic Signage

T-BAR LED Smartlight 15/16" & 9/16"



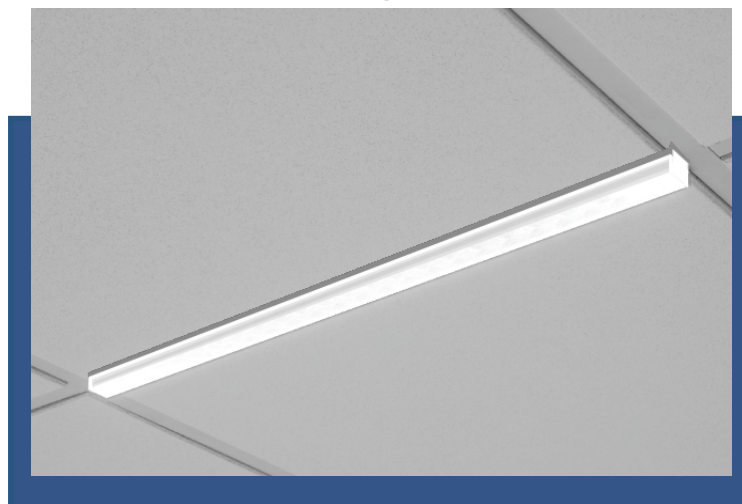
## Cut Off Reflector

T-BAR LED Smartlight 15/16"



## Block Diffusing Lens

T-BAR LED Smartlight 15/16" & 9/16"



### **Boutique Series**

Focusing attention on conservation and sustainability, this series of single and double wall sconces uses repurposed and reclaimed woods and aluminum.



### **Icon Series**

The ICON linear fluorescent has a familiar aesthetic at first glance, making it a great choice for transitional and contemporary spaces.



AYRE is committed to energy efficiency in design and the use of renewable and reclaimable resources. They work with a number of local sources within the design community to repurpose their waste and cutoffs for use in their fixtures and custom design applications. From design development through engineering to conscientious manufacturing for a sustainable environment, the AYRE team brings concepts to reality. Simply stated, AYRE delivers innovative lighting solutions with efficiency, creativity and a respect for real world project deadlines and budgets.

AYRE Lighting Group embraces a design-based approach to develop innovative custom energy efficient lighting solutions. Utilizing a collaborative workflow, AYRE creates the DESIGN ENVELOPE to deliver highly efficient lighting technologies into the architectural space.

Every custom project has its unique specifications in both design or logistics. We take on each project with the same structured workflow balancing these needs that we have refined over the years. A clear understanding of the project goals backed with a staged development process keeps everyone informed and on schedule. We have broken down the collaborative workflow into 5 easy steps.

## PROJECT WORKFLOW

### 01. BRIEFING

Understanding your project goals: We start by clearly understanding your fixture types/needs, installation space, time lines, client deliverables. .

### 02. RESEARCH

AYRE brings insight and expertise in lighting design, technology, and project experience to help determine and qualify the project goals for you and your client.

### 03. CREATE

Develop concepts through sketches, mock-ups, orthographic drawings, and photo-realistic renderings to visualize your product before costly tooling and physical sampling.

### 04. DEVELOP

Through a collaborative workflow we will review design directions and develop a final product through visual aids and physical prototypes bringing your fixture to life.

### 05. PRODUCE

Reviews, final approvals, packaging, installation instructions and quality control are all part of our custom practices. Shipping and manufacturing logistics help you get your delivery on time to meet project deadlines. Once shipped AYRE provides installation support and continued support post project for you and your clients.



# Custom Work





Optec LED Lighting is a supplier of high-efficiency, super-bright LED luminaires, ideal for indoor and outdoor applications. The super-bright LED lighting fixtures feature a patented thermal management system that provides efficient heat dissipation and extended LED life.

"I'm impressed with the tremendous energy savings and payback. My only regret is that we didn't do it sooner."

Michael Love – President, Love Chevrolet



## OPTEC LED LIGHTING PRODUCTS MAKE SENSE...

### FOR THE BUDGET

- Lower power costs
- Long life Nichia LEDs
- Low cost of ownership
- Virtually maintenance-free modular housing

### FOR SPECIFIC NEEDS

- Automatic dimming control
- Adjustable lens for customizable light patterns
- Independently replaceable
- Uniform color and temperature

### FOR THE PLANET

- Lower energy consumption
- No toxic mercury
- No UV or IR radiation
- Low CO2 emissions

# You'll see LED lighting in the best places.

Optec LED Lighting products are suited for a wide variety of commercial, transportation, industrial and institutional applications. They greatly reduce energy consumption and costs while virtually eliminating maintenance. The time and money saved on upkeep is now redirected to other needs.

Compared to traditional metal halide or the industrial look of fluorescents, aesthetically pleasing Optec LED lighting fixtures significantly add to curb appeal and help draw in customers. As an added benefit, the increased visibility, true color rendering, and uniform lighting help reduce crime.

Just to name a few applications.....



## **Automotive/Equipment Dealerships**

Optec LED luminaires provide continuous light levels for the entire parking lot, interior show room and service bays, reduce hazardous waste disposal, and more efficient light distribution than metal halide fixtures. Plus, these luminaires are virtually maintenance free, offering another opportunity to further reduce expenses.



## **Education**

Colleges and universities energy consumption has a large impact on both financial and environmental interests. New construction, aging infrastructure, financial constraints, increasing energy costs, and environmental responsibility are motivating institutions to re-evaluate their energy demand and related conservation programs.



## **Restaurants**

The U.S. Environmental Protection Agency estimates that if a QSR, fast casual or fine dining restaurant cuts its energy costs by just 20 percent, profits could increase by 30 percent or more. One way restaurants are making day-to-day operations more energy efficient and sustainable is through the installation of exterior Optec LED luminaires. Customers are drawn to properties that look safe, clean and well-maintained.

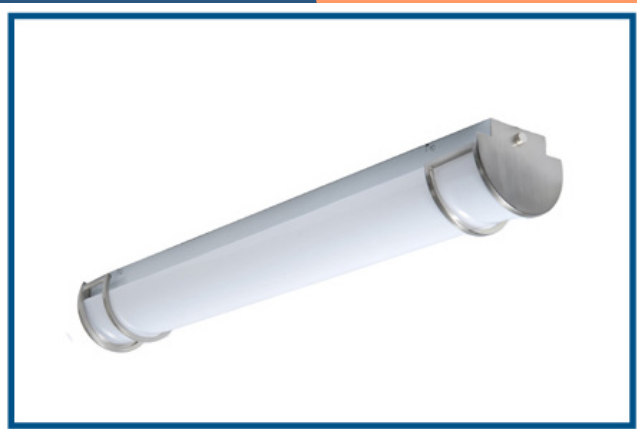


TEXAS

FLUORESCENTS

and LED

Texas Fluorescents is one of the fastest growing suppliers of energy saving lighting providing today's most efficient fixtures to exact specifications, fast, hassle free and competitively priced. Despite it's name, Texas Fluorescents now has one of the most comprehensive LED Lighting in the Industry. Texas Fluorescents LED assortment of high bays, linear recessed fixtures, linear pendants and strips and outdoor fixtures have the same quality as their conventional fluorescent products with the same value pricing that has made it a go to brand for discriminating customers with a budget. Texas Fluorescents continues to expand its fabrication facility including adding a new Powder Coat Paint Line to enable even faster turnaround and the ability to make exactly what the customer needs. It's versatile assembly operating in Dallas, Texas and large component inventory enable it to provide your exact fixtures in less time than our competition.





World-wide component sourcing and expanded fabrication capabilities has enabled them to develop a wide range of specification grade products that historically were only available to the largest companies with significant tooling investments. Now Texas Fluorescents not only provides great quality products but can offer them in a range of options with short lead-time at affordable prices.



NEW

Let Bertha II Make Your Next LED Troffer or Troffer Retrofit Kit

Every 2.5 minutes, Texas Fluorescents' robot, Bertha II, makes a highly reflective and perfectly engineered reflector to accommodate for long life, high efficient LED Arrays. This LED reflector kit is used in Texas Fluorescents 2x4 Troffer and the very popular LED Troffer Retrofit Kit. [See Video Here](#)



## Linear LED Lighting

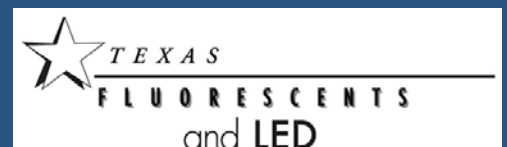
An eye catching selection of four LED Linear Lighting channels that can be surface or pendant mounted individually or in a continuous run that put where you want it with style and sustainability. [Click here for more.](#)



## Buy American

The majority of Texas Fluorescents Products are domestically produced in their Carrollton, Texas facility that comply with the Buy American requirements.

Check out the website for more info: <http://www.texasfluorescents.com/index.php/buy-american>



# Meet Jason Rivard



We are pleased to announce our newest addition to the Sunrise Lighting Systems Team!

Before joining Sunrise Lighting, Jason worked as an outside sales rep for Graybar Electric. He also worked for Legacy Lighting as a general manager and Senior Sales Rep. His knowledgeable experience in LED Lighting, sales, and customer service makes him a perfect addition to our team.

When Jason isn't at work, he enjoys spending time with his family and playing video games. He says he looks forward to the new experience.

Feel free to email or call him with any questions!

Sunrise Lighting Systems was founded on the notion of providing superior service to our customers. Having a broad range of product lines from decorative and specialty lighting to commercial and site lighting is just one way of accomplishing that goal. There is always a friendly and knowledgeable member of the sales team available to help you with your lighting requirements.

## Contact Us

Give us a call for more information!

### Sunrise Lighting Systems

360 W. Bedford Suite 116  
Fresno, CA 93711

(559) 435-6090

Visit us on the web at  
[www.sunriselightingsystems.com](http://www.sunriselightingsystems.com)

# Who's Who?

## Robert McVicar Sr. - President

[robertsr@sunriselightingsystems.com](mailto:robertsr@sunriselightingsystems.com)

## Gina Schmidt—Project Mgr/Customer Service

[gina@sunriselightingsystems.com](mailto:gina@sunriselightingsystems.com)

## Robert McVicar Jr. - Outside Sales/Quotations

[robertjr@sunriselightingsystems.com](mailto:robertjr@sunriselightingsystems.com)

## John Rivera - Inside Sales/Quotations

[john@sunriselightingsystems.com](mailto:john@sunriselightingsystems.com)

## Jason Rivard - Specifications & Sales

[jason@sunriselightingsystems.com](mailto:jason@sunriselightingsystems.com)

## Kandace McVicar - Administrative Assistant

[kandace@sunriselightingsystems.com](mailto:kandace@sunriselightingsystems.com)